

Incline Conveyors

N-CPR Conveyor



These aesthetically pleasing Incline Conveyors from MB Conveyors are a standard means to transport materials between factory processes on higher or lower elevations, where an incline is required to raise parts to differing levels or to create a bridge in a conveyor line.

Incline Conveyors provide safe product movement while optimising for efficiency and speed and can be customised as per production requirements.

They are suitable for integration with a wide range of conveyor types to build a system to meet your needs. The standard motor supply voltage is 400 Volts/50 Hz, and standard temperature resistance of the belts are -10°C to 90°C. Fixed standard conveyor speed is 4.5m/minute.

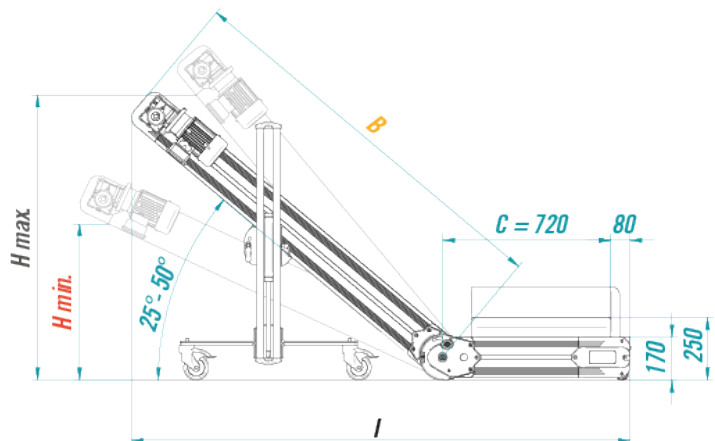
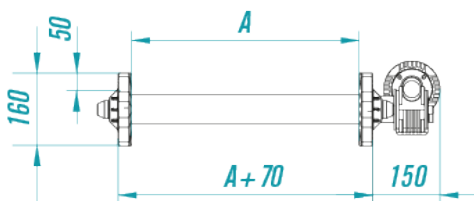


Main characteristics:

- Anodized ALU profile structure (thickness 15 Microns) Alloy 6060 with h 50 mm built-in non-removable side panels
- Standard configuration with central base complete with gas pistons and padlockable switch/motor protector + cable and plug
- Standard cut-proof, oil-proof belt with smooth green Polyurethane covering (ref. Pantone 320) and h 30 mm heat-welded slats at 400 mm pitch; vulcanized belt joint.
- Belt details:
 - Hardness of PU cover: 92 Shore
 - Contact temperature: -10 +110°C
 - Operating temperature: -10 +90°C
- NOTE : Dim. Max B+C = 6000 mm

Drive Unit:

- Power: 0,12 kW
- Speed: 4.5 m/min fixed
- Voltage: 400 V / 50 Hz
- Std installation: on left-hand side with fixed drive and shaft-mounted flange
- Worm reduction gear with life-long lubrication



| | A | B | H min (25°) | H max (50°) | I (40°) |
|---------|--------|---------|-------------|-------------|---------|
| N-CPR.0 | 140 mm | 1500 mm | 550 mm | 1000 mm | 2000 mm |
| N-CPR.1 | 240 mm | 1500 mm | 550 mm | 1000 mm | 2000 mm |
| N-CPR.2 | 340 mm | 1800 mm | 650 mm | 1250 mm | 2250 mm |
| N-CPR.3 | 440 mm | 2000 mm | 750 mm | 1400 mm | 2400 mm |
| N-CPR.4 | 540 mm | 2000 mm | 750 mm | 1400 mm | 2400 mm |

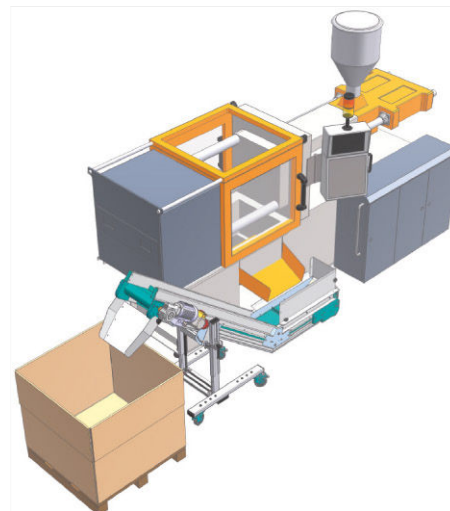
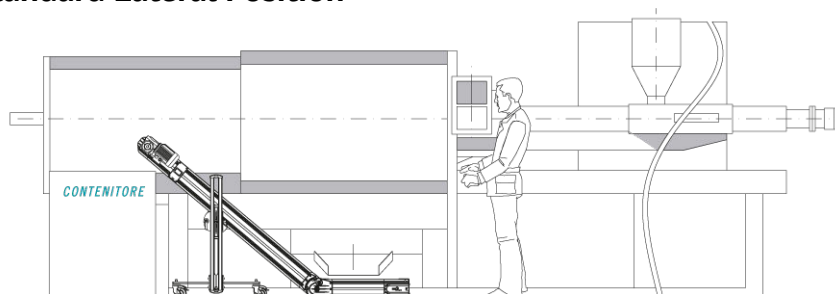
Horizontal Flat Bed Conveyors

PA Standard Flat Conveyor

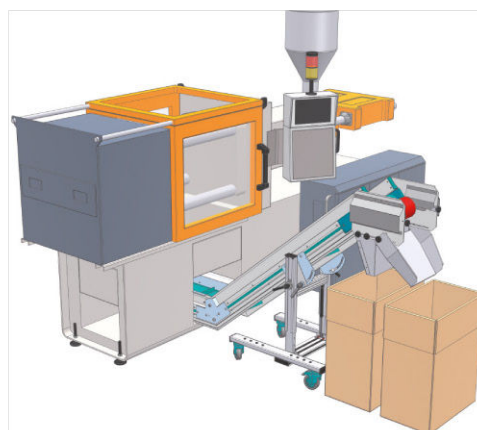
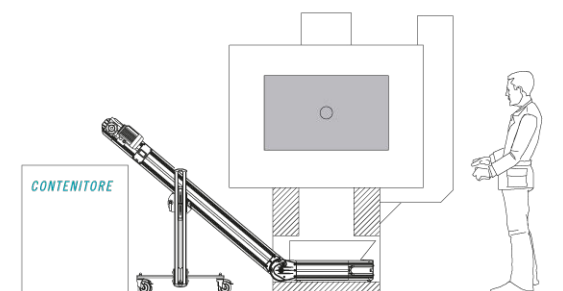


Examples of positioning beside the Injection Moulding Machine

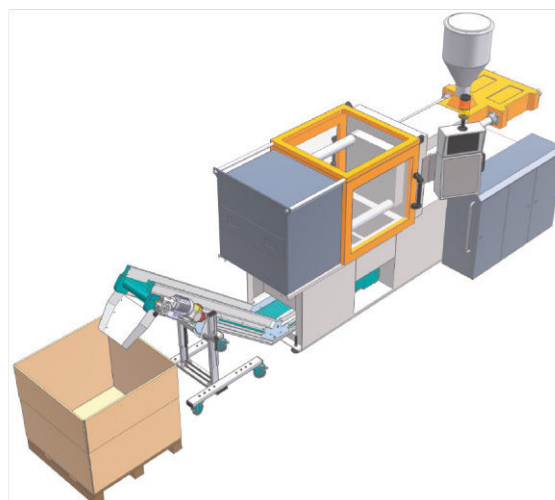
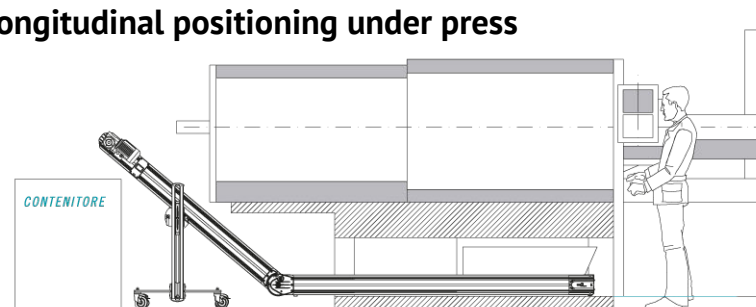
Standard Lateral Position



Positioning at right angles under press



Longitudinal positioning under press



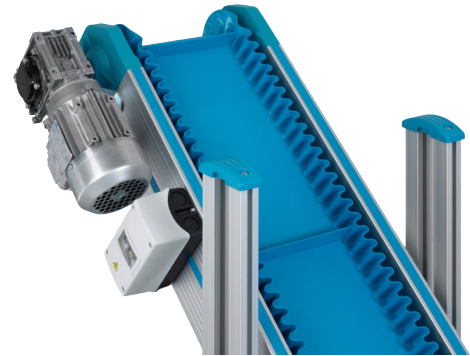
Horizontal Flat Bed Conveyors

PA Standard Flat Conveyor



N-CPR with belt complete with SPONDAFLEX

- Solution used for conveying very small products requiring absolutely reliable lateral containment.
- The product is unable to fall off the belt or get caught under the side panels.
- The standard height of the spondaflex is 30mm, used in conjunction with H 20mm slats.
- Use of spondalex reduces the useful width of the conveyor.



N-CPR easy line version

- Compared to the standard line, the Easy Line version has a simple but functionally designed supporting legs that still allow the angle of the sloping section and the height of the conveyor to be adjusted with the same parameters as the standard solution.

N-CPR in the FDA Version

- The conveyor has been designed to convey products in environments conforming to FDA standards.
- The AISI 304 stainless steel hopper collects product as it drops from the mould, complete with pull-out drawer for quality control.
- The entire section along which the product moves on the conveyor is protected by a polycarbonate guard.



N-CPR Hopper

- The Hopper is installed on conveyors which are usually positioned in a longitudinal position inside the press.
- The size of the hopper is adapted to suit the dimensions of the press compartment and is defined on a case-by-case basis.
- These hoppers are made of 2mm thick AISI 304 stainless steel sheet.